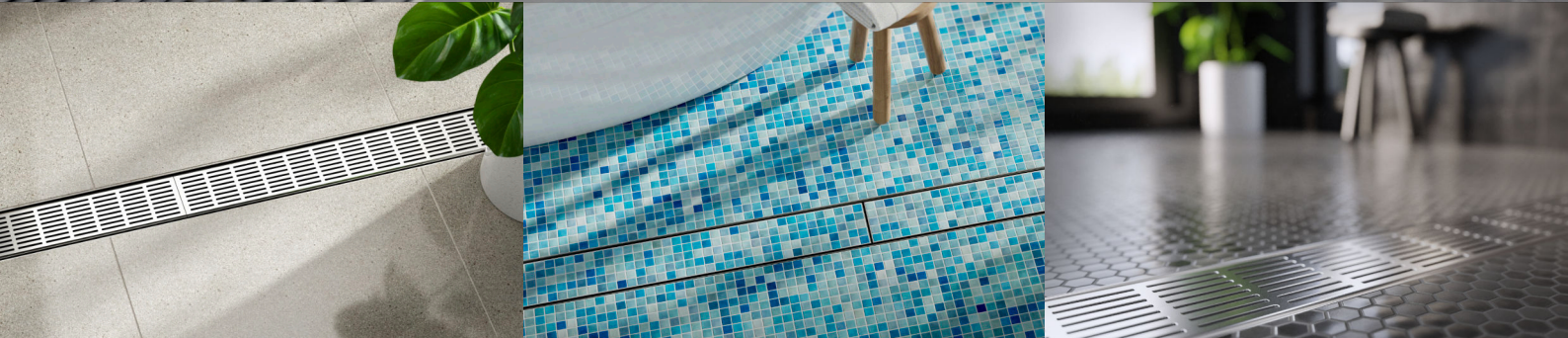




# Fixed Length Linear Drainage. Centre outlet. Ready to install.

With no assembly required, the Fixed Length series is available in standard length, fully finished stainless steel drainage units. Ready for installation.



COLOUR FINISHES

- ✓ Standard length grates + channels  
900mm / 1000mm / 1200mm / 1500mm
- ✓ Tile Insert Drains  
900mm / 1000mm / 1200mm
- ✓ Centre waste outlet  
Adaptable / Easy to Install
- ✓ Available in 65 + 100 Range

### Available Grate Styles



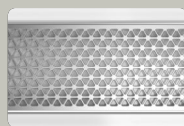
**AR**  
Architectural Grate  
2mm wire / 2.5mm gap



**TR**  
Standard Grate  
3mm wire / 5mm gap



**Ti**  
Tile Insert



**MND**  
Marc Newson  
Design



**PS**  
Punched Slot



**PPS**  
Punched  
Perpendicular



**PAS**  
Punched Angle

Phone 1300 653 403 | Web [stormtech.com.au](http://stormtech.com.au)



# Fixed Length

Linear drainage in fixed lengths with **centre outlet.** Ready for installation.

## 100 Range



**100ARiCO20**

Premium Grate  
2mm wire / 2.5mm gap  
106mm x 23mm  
DN80



**100TRiCO20**

Standard Grate  
3mm wire / 5mm gap  
106mm x 23mm  
DN80



**100MNDiCO20**

Marc Newson Design  
106mm x 23mm  
DN80



**100PSiCO20**

Punched Slot Design  
106mm x 23mm  
DN80



**100PPSiCO20**

Punched Perpendicular Design  
106mm x 23mm  
DN80



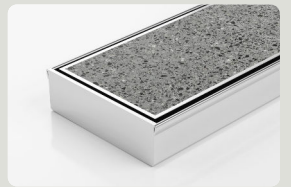
**100PASiCO20**

Punched Angle Design  
106mm x 23mm  
DN80



**100TiCO20**

Tile Insert / 1.5mm Thick  
Tiles up to 10mm Deep  
106mm x 23mm  
DN80



**100TiCO30**

Tile Insert / 3mm Thick  
Tiles up to 12mm Deep  
106mm x 31mm  
DN80

## 65 Range



**65ARiCO25**

Premium Grate  
2mm wire / 2.5mm gap  
72mm x 27mm  
DN50



**65TRiCO25**

Standard Grate  
3mm wire / 5mm gap  
72mm x 27mm  
DN50



**65MNDiCO25**

Marc Newson Design  
72mm x 27mm  
DN50



**65PSiCO25**

Punched Slot Design  
72mm x 27mm  
DN50



**65PPSiCO25**

Punched Perpendicular Design  
72mm x 27mm  
DN50



**65PASiCO25**

Punched Angle Design  
72mm x 27mm  
DN50



**65TiCO25**

Tile Insert / 1.5mm Thick  
Tiles up to 10mm Deep  
72mm x 27mm  
DN50



**65TiCO30**

Tile Insert / 3mm Thick  
Tiles up to 12mm Deep  
72mm x 31mm  
DN50